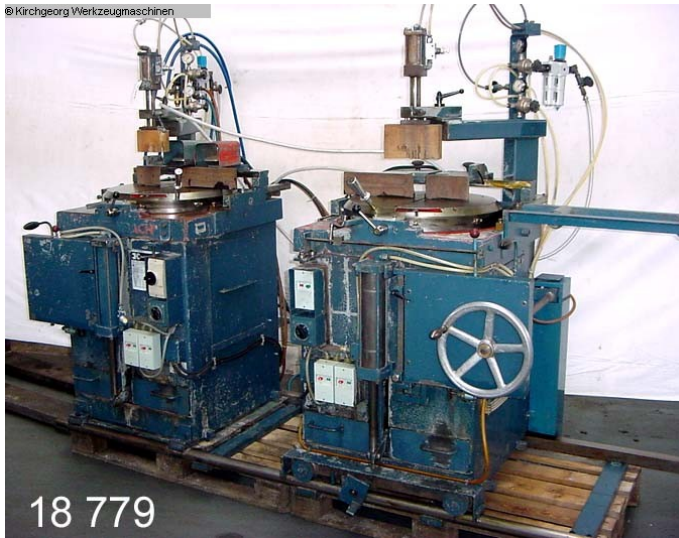


Double Mitre Box Saw

**KIRCHGEORG**  
WERKZEUGMASCHINEN GMBH

## KALTENBACH

SKL 370



### OFFER DETAILS

Stock-No.	1072-18779
Type of machine	Double Mitre Box Saw
Make	KALTENBACH
Type	SKL 370
Location	Dreieich (near Frankfurt/Main)
Country of origin	Deutschland
Delivery time	immediately
Price	on request

### TECHNICAL DETAILS

saw blade diameter	370 mm
cutting range round	115 mm
cutting range square	105 mm
cutting length min.	730 mm
cutting length max.	4000 mm
saw blade turning speeds	1250 / 2500 U/min
table rotating	180 °
stroke	120 mm
feed stepless	0 - 500 mm/min
coolant	
capacity 45 degrees: square	95 mm
capacity 45 degrees: flat	50 x 200 mm
cutting speed	1250 / 2500 m/min
weight of the machine ca.	1,1 t
dimensions of the machine ca.	5,00 x 1,30 x 2,00 m

### ADDITIONAL INFORMATION

Double Mitre Saw for aluminium  
consists of two SKL 370 Circular Saws  
on common rails, one saw fixed one saw movable.

- Serial No.: 28232 / 28233
- pneumatic clamping of workpiece
- coolant equipment

### LINK TO OFFER